



## Forsyth County Procurement

Donna Kukarola, CPPO, CPPB, Director

April 15, 2020

### **ADDENDUM #3 BID NO. 20-20-3150**

For: Sanders Road Sidewalk Re-Bid, 5' sidewalk with curb and gutter along east side of Sanders Road S.R. 20 to Buford Dam Road.

This addendum supersedes and supplements all portions of the bidding documents and becomes part of the contract documents for the above-referenced project.

Where any item called for in the specifications or indicated on the drawings is supplemented hereby, the original requirements shall remain in effect.

Where any original item is amended, voided or superseded hereby, the provision of such item not so specifically amended, voided or superseded shall remain in effect.

#### **Response to questions received (*response in italics*)**

**1. Is there a utility adjustment schedule for this project?**

There are (2) Sewer Lines and (1) 8" Water Line (City of Cumming) that have not been relocated (cannot be relocated). The contractor (with County supervision) is to work around them. Attached is the Utility mark-ups received from the City depicting those locations. All of the other utilities have been relocated.

**End of Addendum #3**



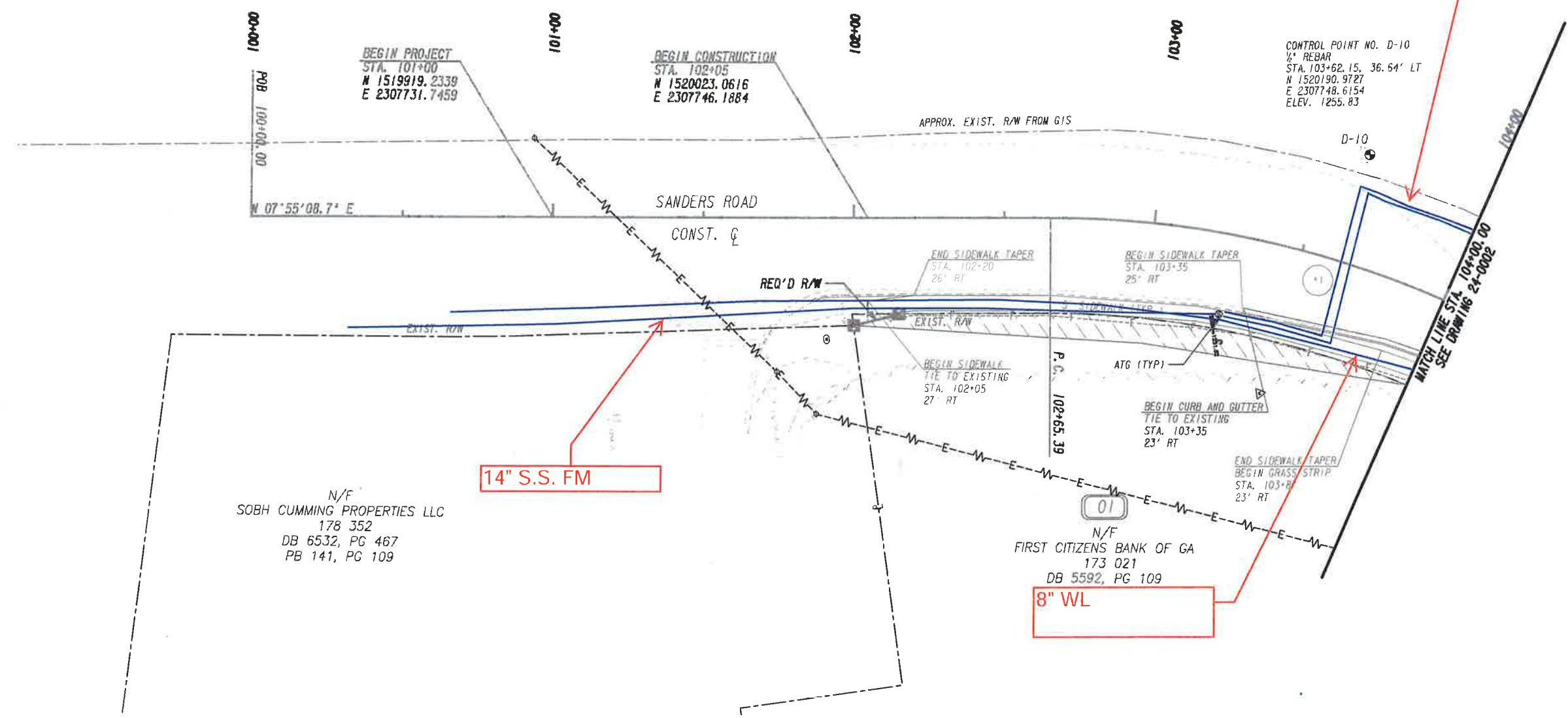
Curve 1  
 PI Sta= 103+95.33  
 Δ= 1520211.74  
 E= 2307772.43  
 DELTA= 43°34'56.7" (RT)  
 D= 17°37'46.09"  
 T= 129.93  
 L= 247.21  
 R= 325.00  
 E= 25.01

LOCATION OF WL'S AND S.S.  
 FM ARE APPROXIMATE  
 FIELD LOCATION OF WL'S AND  
 S.S. FM NEEDED

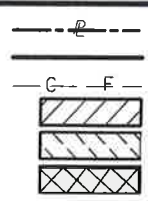
12" & 6" S.S. FM

14" S.S. FM

8" WL

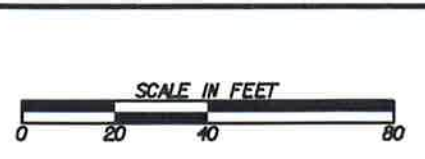


PROPERTY AND EXISTING R/W LINE  
 REQUIRED R/W LINE  
 CONSTRUCTION LIMITS  
 EASEMENT FOR CONSTR  
 & MAINTENANCE OF SLOPES  
 EASEMENT FOR CONSTR OF SLOPES  
 EASEMENT FOR CONSTR OF DRIVES



BEGIN LIMIT OF ACCESS.....BLA  
 END LIMIT OF ACCESS.....ELA  
 LIMIT OF ACCESS  
 REQ'D R/W & LIMIT OF ACCESS  
 ORANGE BARRIER FENCE  
 ESA - ENV. SENSITIVE AREA  
 (SEE ERIT TABLE)

**W**  
**Wolverton & Associates**  
 Consulting Engineers - Land Surveyors  
 6745 Sugarloaf Parkway - Suite 100 - Duluth, Georgia 30097  
 Phone: 770-447-8999 - Fax: 770-447-9070  
 www.wolverton-assoc.com



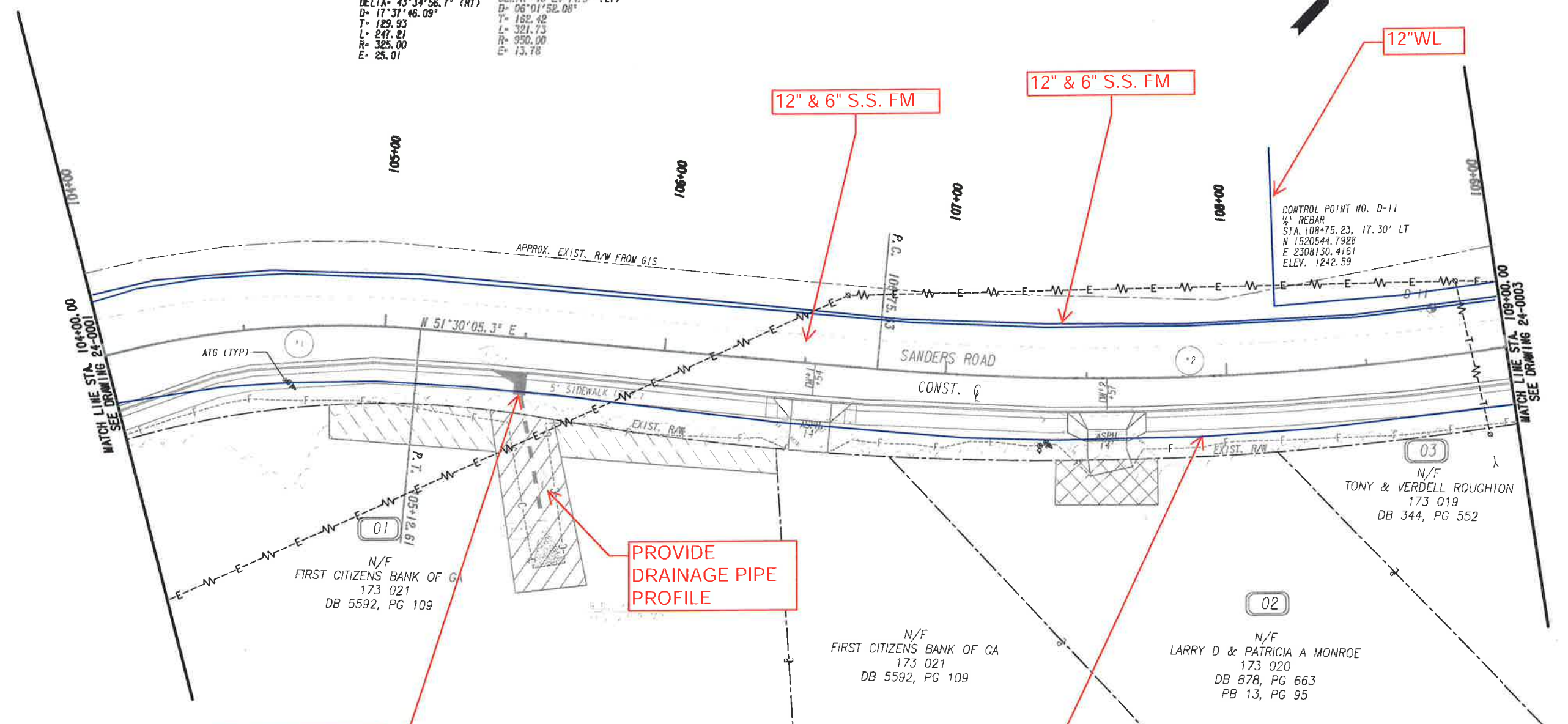
REVISION DATES	

UTILITY PLANS			
SANDERS RD			
SIDEWALK IMPROVEMENTS			
CHECKED:	DATE:	DRAWING No.	
BACKCHECKED:	DATE:	24-0001	
CORRECTED:	DATE:		
VERIFIED:	DATE:		

Curve 1  
 PI Sta= 103+95.33  
 N= 1520211.74  
 E= 2307772.43  
 DELTA= 43°34'56.7" (RT)  
 D= 17°37'46.09"  
 T= 129.93  
 L= 247.21  
 R= 325.00  
 E= 25.01

Curve 2  
 PI Sta= 108+36.05  
 N= 1520495.21  
 E= 2308128.82  
 DELTA= 19°24'14.9" (LT)  
 D= 06°01'52.08"  
 T= 162.42  
 L= 321.75  
 R= 950.00  
 E= 13.78

LOCATION OF WL'S AND S.S. FM ARE APPROXIMATE  
 FIELD LOCATION OF WL'S AND S.S. FM NEEDED



POSSIBLE CONFLICT. POT HOLE AT STA. 105+50

PROVIDE DRAINAGE PIPE PROFILE

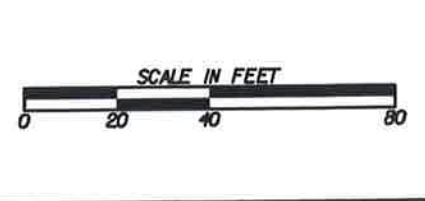
8" WL

CONTROL POINT NO. D-11  
 1/2" REBAR  
 STA. 108+75.23, 17.30' LT  
 N 1520544.7928  
 E 2308130.4161  
 ELEV. 1242.59

PROPERTY AND EXISTING R/W LINE  
 REQUIRED R/W LINE  
 CONSTRUCTION LIMITS  
 EASEMENT FOR CONSTR  
 & MAINTENANCE OF SLOPES  
 EASEMENT FOR CONSTR OF SLOPES  
 EASEMENT FOR CONSTR OF DRIVES

BEGIN LIMIT OF ACCESS.....BLA  
 END LIMIT OF ACCESS.....ELA  
 LIMIT OF ACCESS  
 REQ'D R/W & LIMIT OF ACCESS  
 ORANGE BARRIER FENCE  
 ESA - ENV. SENSITIVE AREA  
 (SEE ERIT TABLE)

**Wolverton & Associates**  
 Consulting Engineers - Land Surveyors  
 6745 Sugarloaf Parkway - Suite 100 - Duluth, Georgia 30097  
 Phone: 770-417-8999 - Fax: 770-417-9070  
 www.wolverton-assoc.com



REVISION DATES	

**UTILITY PLANS**  
**SANDERS RD**  
**SIDEWALK IMPROVEMENTS**

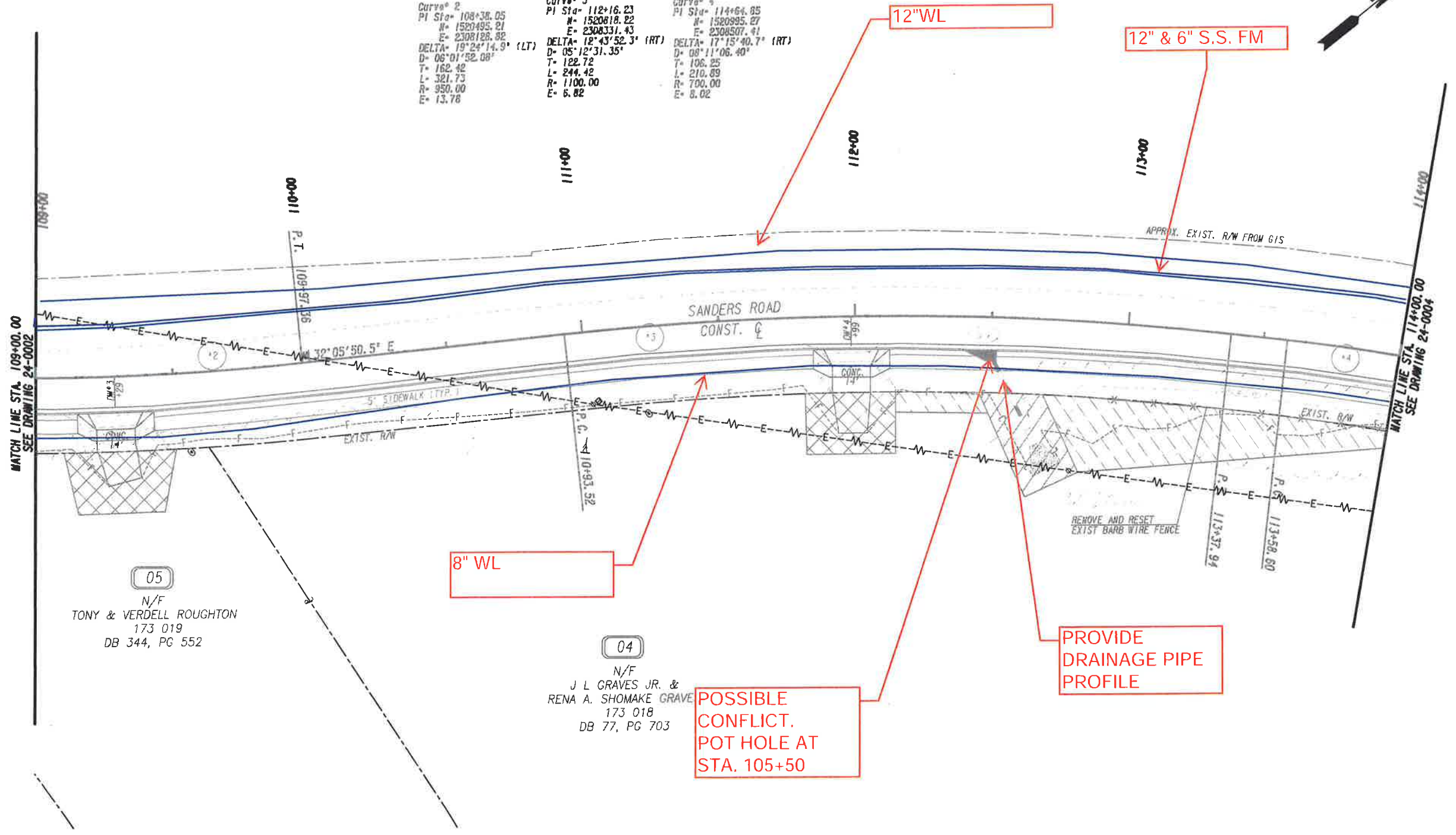
CHECKED:	DATE:	DRAWING No. <b>24-0002</b>
BACKCHECKED:	DATE:	
CORRECTED:	DATE:	
VERIFIED:	DATE:	

LOCATION OF WL'S AND S.S. FM ARE APPROXIMATE  
 FIELD LOCATION OF WL'S AND S.S. FM NEEDED

Curve 2  
 PI Sta= 108+38.05  
 N= 1520495.21  
 E= 2308128.82  
 DELTA= 19°24'14.9" (LT)  
 D= 06°01'52.08"  
 T= 162.42  
 L= 321.73  
 R= 950.00  
 E= 13.78

Curve 3  
 PI Sta= 112+16.23  
 N= 1520618.22  
 E= 2308331.43  
 DELTA= 12°43'52.3" (RT)  
 D= 05°12'31.35"  
 T= 122.72  
 L= 244.42  
 R= 1100.00  
 E= 6.82

Curve 4  
 PI Sta= 114+64.85  
 N= 1520395.27  
 E= 2308507.41  
 DELTA= 17°15'40.7" (RT)  
 D= 08°11'06.40"  
 T= 106.25  
 L= 210.89  
 R= 700.00  
 E= 8.02



MATCH LINE STA. 109+00.00  
 SEE DRAWING 24-0002

MATCH LINE STA. 114+00.00  
 SEE DRAWING 24-0004

05  
 N/F  
 TONY & VERDELL ROUGHTON  
 173 019  
 DB 344, PG 552

04  
 N/F  
 J L GRAVES JR. &  
 RENA A. SHOMAKE GRAVE  
 173 018  
 DB 77, PG 703

8" WL

12" WL

12" & 6" S.S. FM

PROVIDE DRAINAGE PIPE PROFILE

POSSIBLE CONFLICT. POT HOLE AT STA. 105+50

PROPERTY AND EXISTING R/W LINE  
 REQUIRED R/W LINE  
 CONSTRUCTION LIMITS  
 EASEMENT FOR CONSTR  
 & MAINTENANCE OF SLOPES  
 EASEMENT FOR CONSTR OF SLOPES  
 EASEMENT FOR CONSTR OF DRIVES

BEGIN LIMIT OF ACCESS.....BLA  
 END LIMIT OF ACCESS.....ELA  
 LIMIT OF ACCESS  
 REQ'D R/W & LIMIT OF ACCESS  
 ORANGE BARRIER FENCE  
 ESA - ENV. SENSITIVE AREA  
 (SEE ERIT TABLE)

**Wolverton & Associates**  
 Consulting Engineers - Land Surveyors  
 6745 Sugarloaf Parkway - Suite 100 - Duluth, Georgia 30097  
 Phone: 770-447-8999 - Fax: 770-447-9070  
 www.wolverton-assoc.com



REVISION DATES	

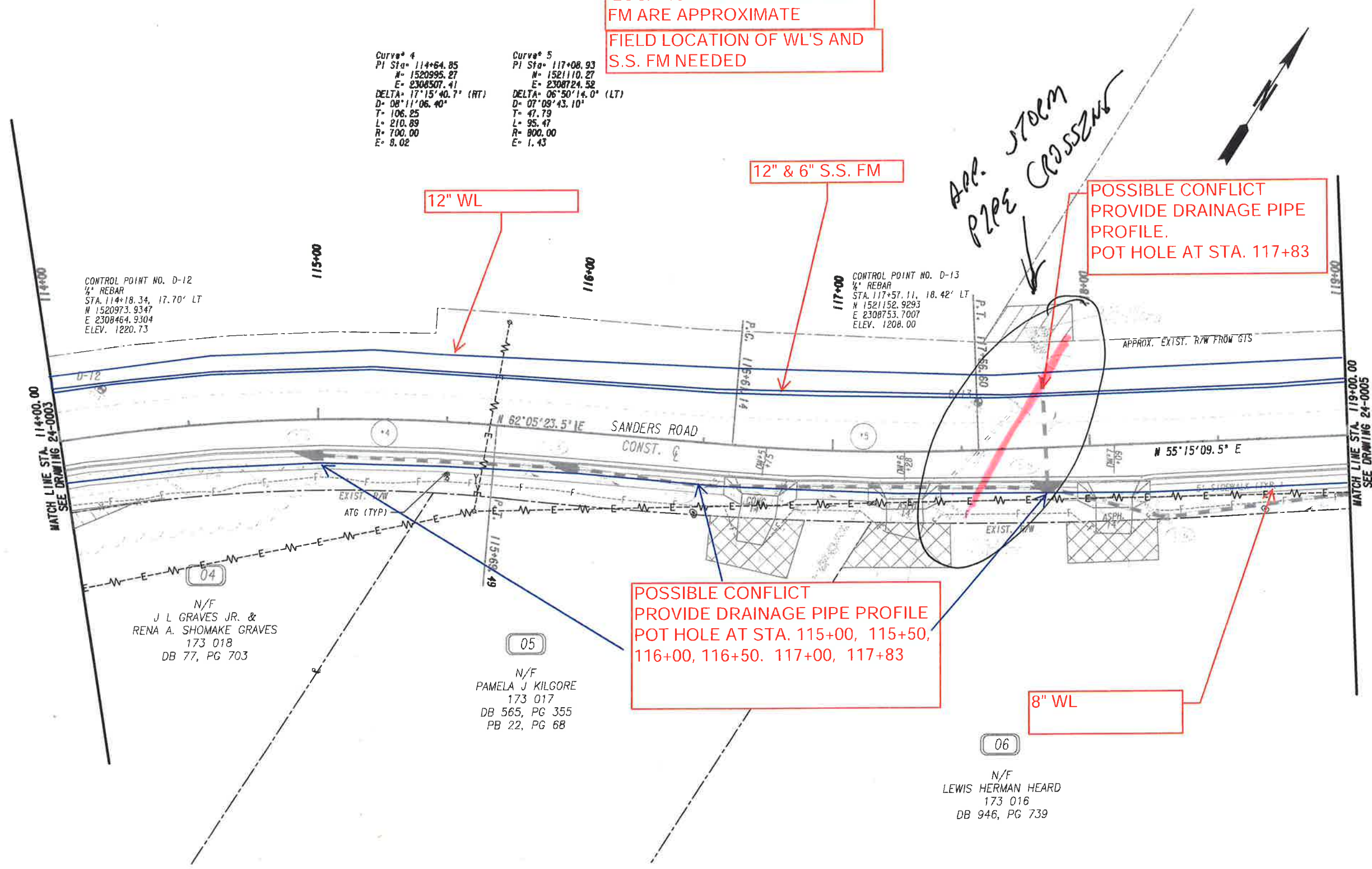
**UTILITY PLANS**  
**SANDERS RD**  
**SIDEWALK IMPROVEMENTS**

CHECKED:	DATE:	DRAWING No.
BACKCHECKED:	DATE:	24-0003
CORRECTED:	DATE:	
VERIFIED:	DATE:	

LOCATION OF WL'S AND S.S. FM ARE APPROXIMATE  
 FIELD LOCATION OF WL'S AND S.S. FM NEEDED

Curve\* 4  
 PI Sta= 114+64.85  
 N= 1520995.27  
 E= 2308507.41  
 DELTA= 17°15'40.7" (RT)  
 D= 08°11'06.40"  
 T= 106.25  
 L= 210.89  
 R= 700.00  
 E= 8.02

Curve\* 5  
 PI Sta= 117+08.93  
 N= 1521110.27  
 E= 2308724.52  
 DELTA= 06°50'14.0" (LT)  
 D= 07°09'43.10"  
 T= 47.79  
 L= 95.47  
 R= 800.00  
 E= 1.43



CONTROL POINT NO. D-12  
 1/2" REBAR  
 STA. 114+18.34, 17.70' LT  
 N 1520973.9347  
 E 2308464.9304  
 ELEV. 1220.73

CONTROL POINT NO. D-13  
 1/2" REBAR  
 STA. 117+57.11, 18.42' LT  
 N 1521152.9293  
 E 2308753.7007  
 ELEV. 1208.00

N/F  
 J L GRAVES JR. &  
 RENA A. SHOMAKE GRAVES  
 173 018  
 DB 77, PG 703

N/F  
 PAMELA J KILGORE  
 173 017  
 DB 565, PG 355  
 PB 22, PG 68

N/F  
 LEWIS HERMAN HEARD  
 173 016  
 DB 946, PG 739

POSSIBLE CONFLICT  
 PROVIDE DRAINAGE PIPE  
 PROFILE.  
 POT HOLE AT STA. 117+83

POSSIBLE CONFLICT  
 PROVIDE DRAINAGE PIPE PROFILE  
 POT HOLE AT STA. 115+00, 115+50,  
 116+00, 116+50, 117+00, 117+83

APP. 3700m  
 PIPE CROSSING

PROPERTY AND EXISTING R/W LINE  
 REQUIRED R/W LINE  
 CONSTRUCTION LIMITS  
 EASEMENT FOR CONSTR  
 & MAINTENANCE OF SLOPES  
 EASEMENT FOR CONSTR OF SLOPES  
 EASEMENT FOR CONSTR OF DRIVES

BEGIN LIMIT OF ACCESS.....BLA  
 END LIMIT OF ACCESS.....ELA  
 LIMIT OF ACCESS  
 REQ'D R/W & LIMIT OF ACCESS  
 ORANGE BARRIER FENCE  
 ESA - ENV. SENSITIVE AREA  
 (SEE ERIT TABLE)

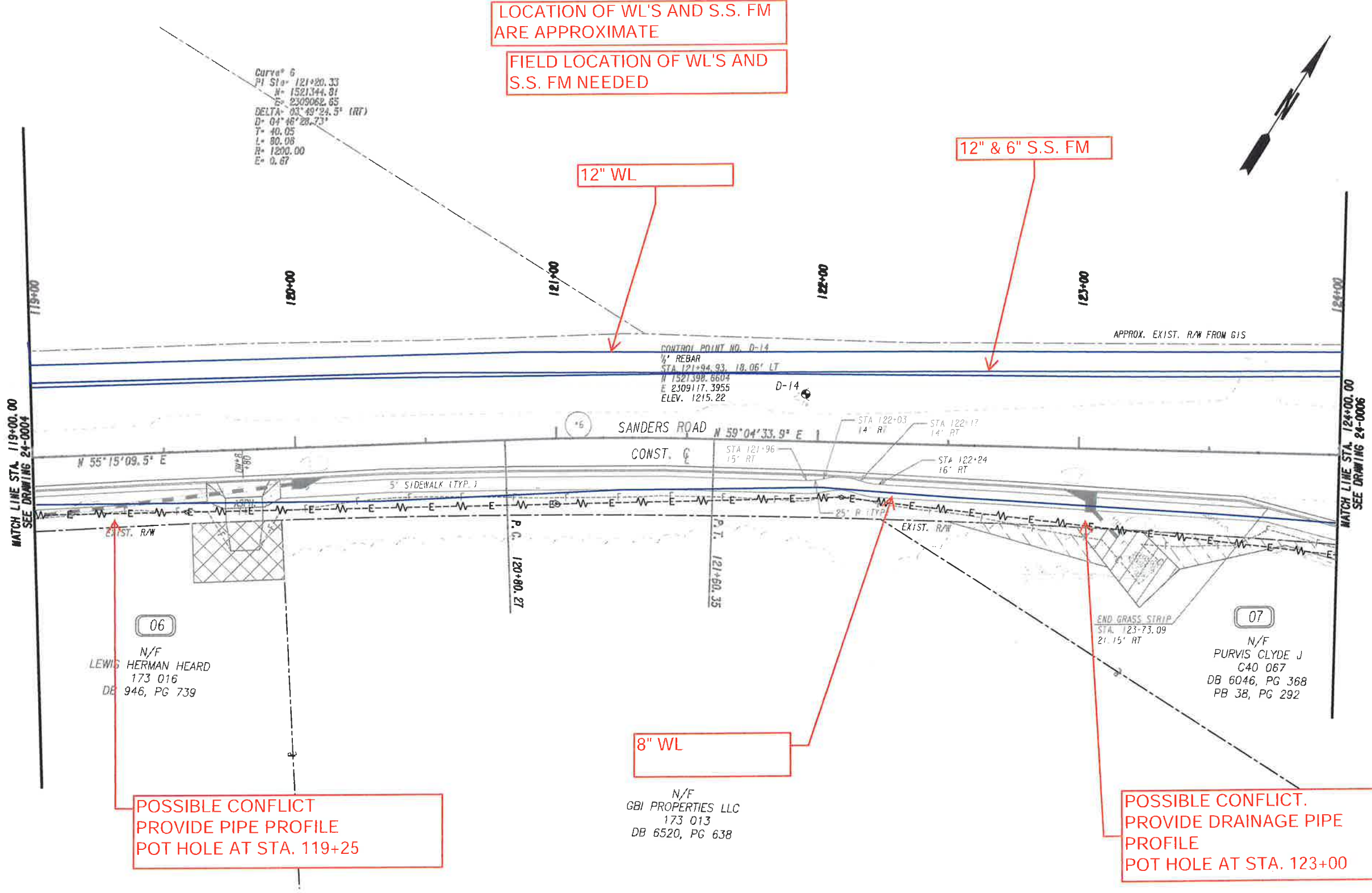
**W**  
**Wolverton & Associates**  
 Consulting Engineers • Land Surveyors  
 6745 Sugarloaf Parkway - Suite 100 - Duluth, Georgia 30097  
 Phone: 770-417-8999 - Fax: 770-417-9070  
 www.wolverton-assoc.com



REVISION DATES	

UTILITY PLANS SANDERS RD SIDEWALK IMPROVEMENTS			
CHECKED:	DATE:	DRAWING No.	
BACKCHECKED:	DATE:	24-0004	
CORRECTED:	DATE:		
VERIFIED:	DATE:		

LOCATION OF WL'S AND S.S. FM ARE APPROXIMATE  
 FIELD LOCATION OF WL'S AND S.S. FM NEEDED



POSSIBLE CONFLICT  
 PROVIDE PIPE PROFILE  
 POT HOLE AT STA. 119+25

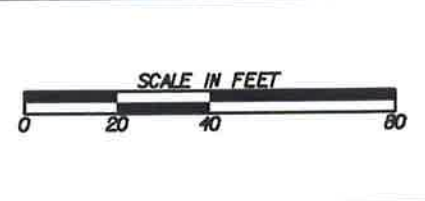
8" WL  
 N/F  
 GBI PROPERTIES LLC  
 173 013  
 DB 6520, PG 638

POSSIBLE CONFLICT.  
 PROVIDE DRAINAGE PIPE  
 PROFILE  
 POT HOLE AT STA. 123+00

PROPERTY AND EXISTING R/W LINE  
 REQUIRED R/W LINE  
 CONSTRUCTION LIMITS  
 EASEMENT FOR CONSTR  
 & MAINTENANCE OF SLOPES  
 EASEMENT FOR CONSTR OF SLOPES  
 EASEMENT FOR CONSTR OF DRIVES

BEGIN LIMIT OF ACCESS.....BLA  
 END LIMIT OF ACCESS.....ELA  
 LIMIT OF ACCESS  
 REQ'D R/W & LIMIT OF ACCESS  
 ORANGE BARRIER FENCE  
 ESA - ENV. SENSITIVE AREA  
 (SEE ERIT TABLE)

**W**  
**Wolverton & Associates**  
 Consulting Engineers • Land Surveyors  
 6745 Sugarloaf Parkway • Suite 100 • Duluth, Georgia 30097  
 Phone: 770-417-8999 • Fax: 770-447-9070  
 www.wolverton-assoc.com

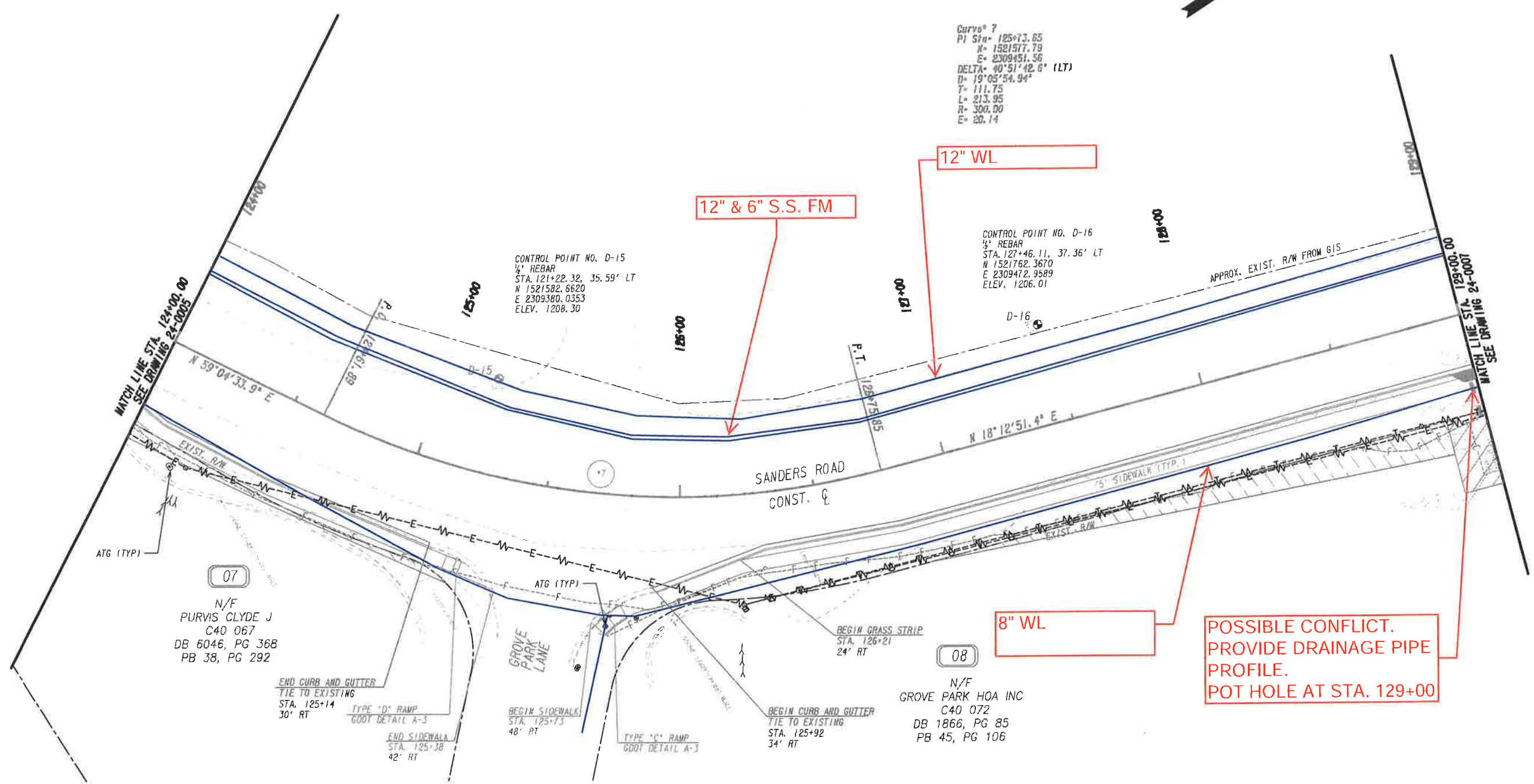


REVISION DATES	

**UTILITY PLANS**  
**SANDERS RD**  
**SIDEWALK IMPROVEMENTS**

CHECKED:	DATE:	DRAWING No. <b>24-0005</b>
BACKCHECKED:	DATE:	
CORRECTED:	DATE:	
VERIFIED:	DATE:	

LOCATION OF WL'S AND S.S. FM ARE APPROXIMATE  
 FIELD LOCATION OF WL'S AND S.S. FM NEEDED



Curve 7  
 PI Sta 125+73.65  
 N= 1521577.79  
 E= 2309451.56  
 DELTA= 40°51'42.6\" (LT)  
 D= 19°05'54.94\"  
 T= 111.75  
 L= 213.95  
 R= 300.00  
 E= 20.14

CONTROL POINT NO. D-15  
 1/4\" REBAR  
 STA. 121+22.32, 35.59' LT  
 N 1521582.6620  
 E 2309380.0353  
 ELEV. 1208.30

CONTROL POINT NO. D-16  
 1/4\" REBAR  
 STA. 127+46.11, 37.36' LT  
 N 1521762.3670  
 E 2309472.9589  
 ELEV. 1206.01

07  
 N/F  
 PURVIS CLYDE J  
 C40 067  
 DB 6046, PG 368  
 PB 38, PG 292

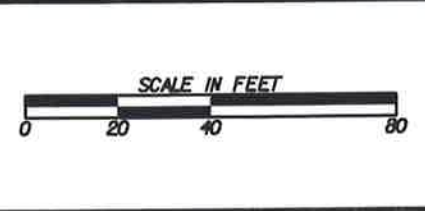
08  
 N/F  
 GROVE PARK HOA INC  
 C40 072  
 DB 1866, PG 85  
 PB 45, PG 106

POSSIBLE CONFLICT.  
 PROVIDE DRAINAGE PIPE  
 PROFILE.  
 POT HOLE AT STA. 129+00

PROPERTY AND EXISTING R/W LINE  
 REQUIRED R/W LINE  
 CONSTRUCTION LIMITS  
 EASEMENT FOR CONSTR  
 & MAINTENANCE OF SLOPES  
 EASEMENT FOR CONSTR OF SLOPES  
 EASEMENT FOR CONSTR OF DRIVES

BEGIN LIMIT OF ACCESS.....BLA  
 END LIMIT OF ACCESS.....ELA  
 LIMIT OF ACCESS  
 REQ'D R/W & LIMIT OF ACCESS  
 ORANGE BARRIER FENCE  
 ESA - ENV. SENSITIVE AREA  
 (SEE ERIT TABLE)

**W**  
**Wolverton & Associates**  
 Consulting Engineers - Land Surveyors  
 6745 Sugarloaf Parkway - Suite 100 - Duluth, Georgia 30097  
 Phone: 770-447-8999 - Fax: 770-447-9070  
 www.wolverton-assoc.com

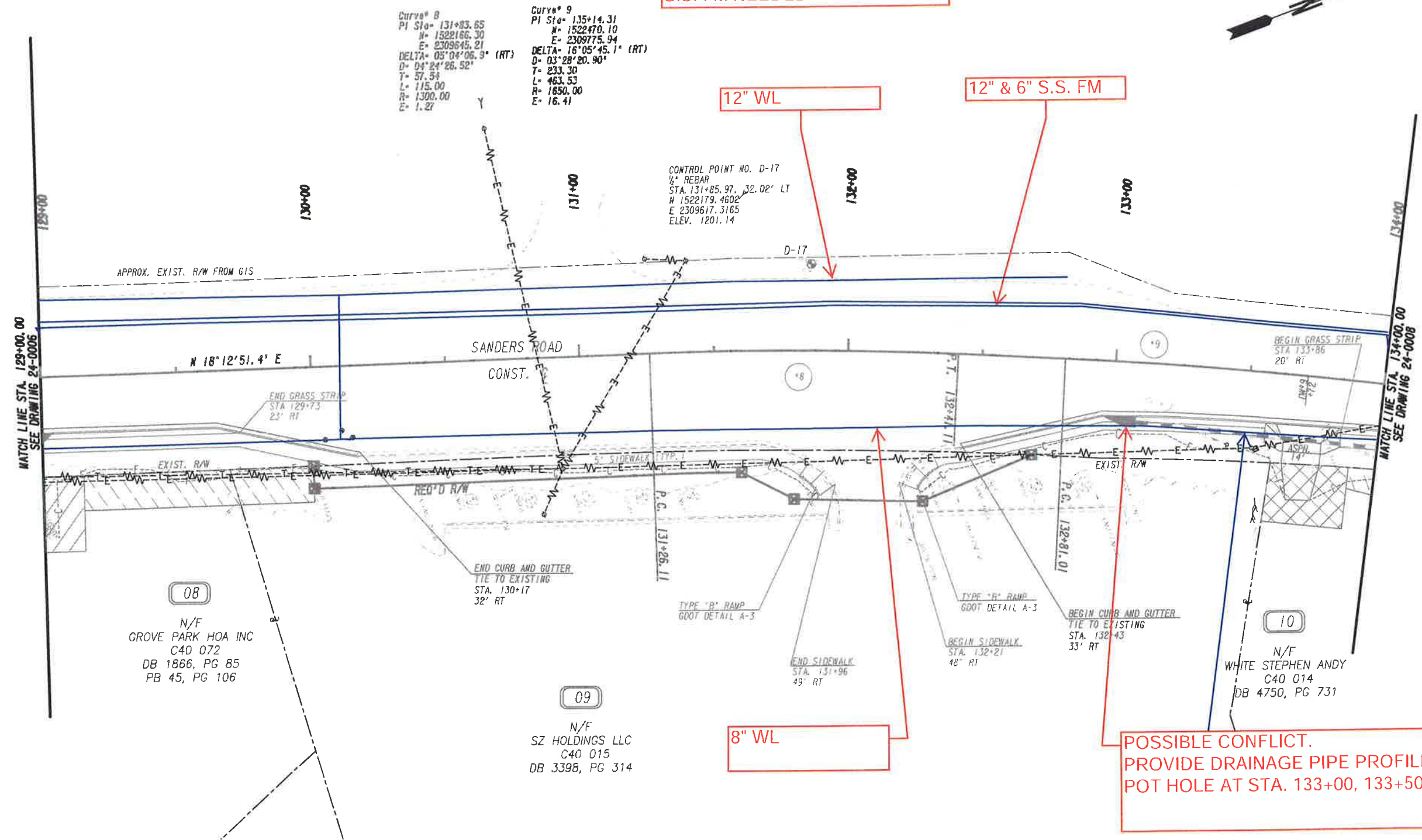


REVISION DATES	

**UTILITY PLANS**  
**SANDERS RD**  
**SIDEWALK IMPROVEMENTS**

CHECKED:	DATE:	DRAWING No. <b>24-0006</b>
BACKCHECKED:	DATE:	
CORRECTED:	DATE:	
VERIFIED:	DATE:	

LOCATION OF WL'S AND S.S. FM ARE APPROXIMATE  
 FIELD LOCATION OF WL'S AND S.S. FM NEEDED



08  
 N/F GROVE PARK HOA INC  
 C40 072  
 DB 1866, PG 85  
 PB 45, PG 106

09  
 N/F SZ HOLDINGS LLC  
 C40 015  
 DB 3398, PG 314

10  
 N/F WHITE STEPHEN ANDY  
 C40 014  
 DB 4750, PG 731

POSSIBLE CONFLICT.  
 PROVIDE DRAINAGE PIPE PROFILE,  
 POT HOLE AT STA. 133+00, 133+50

PROPERTY AND EXISTING R/W LINE  
 REQUIRED R/W LINE  
 CONSTRUCTION LIMITS  
 EASEMENT FOR CONSTR  
 & MAINTENANCE OF SLOPES  
 EASEMENT FOR CONSTR OF SLOPES  
 EASEMENT FOR CONSTR OF DRIVES

BEGIN LIMIT OF ACCESS.....BLA  
 END LIMIT OF ACCESS.....ELA  
 LIMIT OF ACCESS  
 REQ'D R/W & LIMIT OF ACCESS  
 ORANGE BARRIER FENCE  
 ESA - ENV. SENSITIVE AREA  
 (SEE ERIT TABLE)

**W**  
**Wolverton & Associates**  
 Consulting Engineers - Land Surveyors  
 6745 Sugarloaf Parkway - Suite 100 - Duluth, Georgia 30097  
 Phone: 770-447-8999 - Fax: 770-447-9070  
 www.wolverton-assoc.com



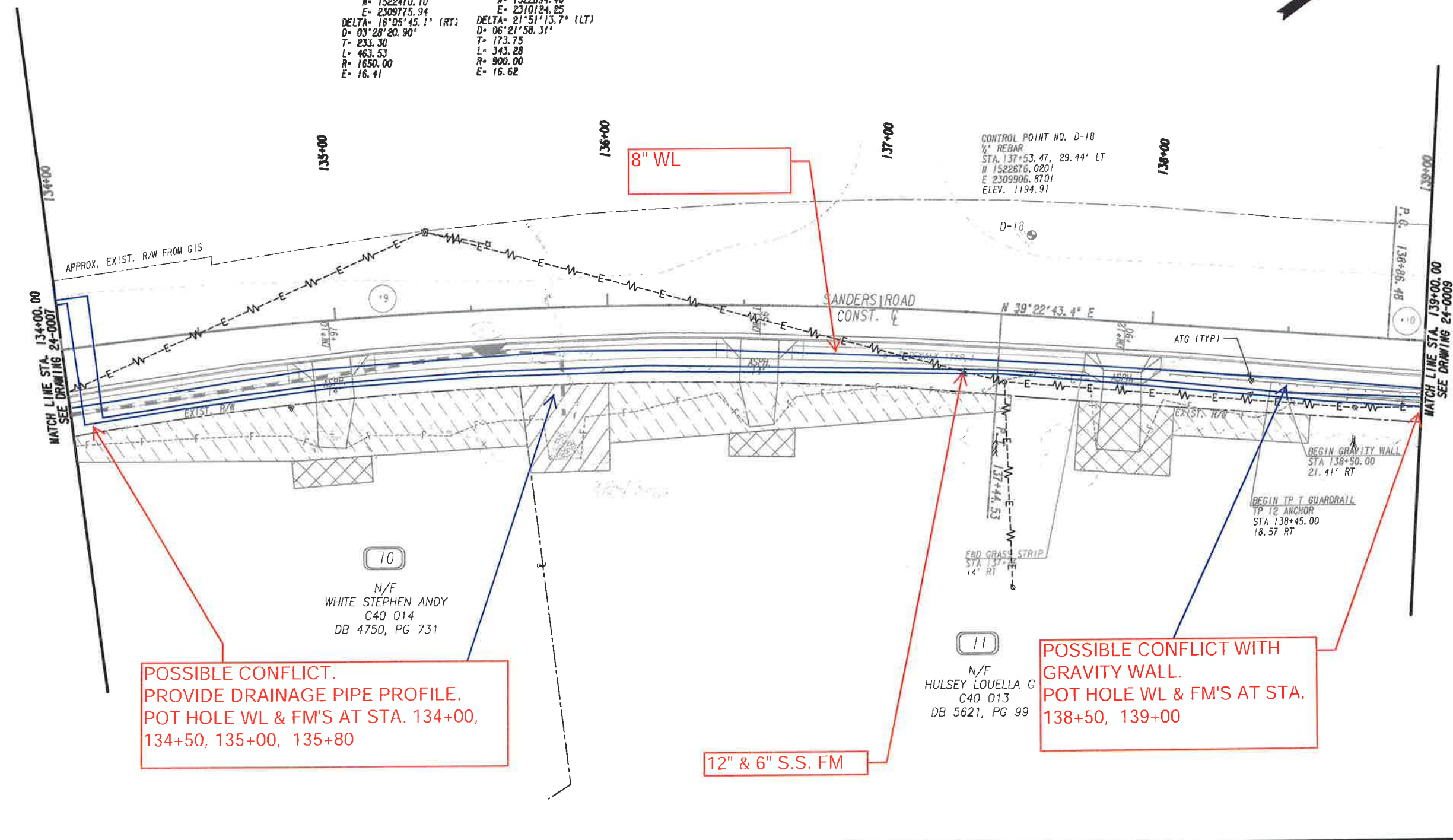
REVISION DATES	

UTILITY PLANS			
SANDERS RD			
SIDEWALK IMPROVEMENTS			
CHECKED:		DATE:	
BACKCHECKED:		DATE:	
CORRECTED:		DATE:	
VERIFIED:		DATE:	
DRAWING No.			24-0007

LOCATION OF WL'S AND S.S. FM ARE APPROXIMATE  
 FIELD LOCATION OF WL'S AND S.S. FM NEEDED

Curve 9  
 PI Sta= 135+14.31  
 M= 1522470.10  
 E= 2309773.94  
 DELTA= 16°05'45.1" (RT)  
 D= 03°28'20.90"  
 T= 233.30  
 L= 463.53  
 R= 1650.00  
 E= 16.41

Curve 10  
 PI Sta= 140+60.23  
 M= 1522894.46  
 E= 2310124.25  
 DELTA= 21°51'13.7" (LT)  
 D= 06°21'58.31"  
 T= 173.75  
 L= 343.28  
 R= 900.00  
 E= 16.62



POSSIBLE CONFLICT.  
 PROVIDE DRAINAGE PIPE PROFILE.  
 POT HOLE WL & FM'S AT STA. 134+00,  
 134+50, 135+00, 135+80

12" & 6" S.S. FM

POSSIBLE CONFLICT WITH  
 GRAVITY WALL.  
 POT HOLE WL & FM'S AT STA.  
 138+50, 139+00

PROPERTY AND EXISTING R/W LINE  
 REQUIRED R/W LINE  
 CONSTRUCTION LIMITS  
 EASEMENT FOR CONSTR  
 & MAINTENANCE OF SLOPES  
 EASEMENT FOR CONSTR OF SLOPES  
 EASEMENT FOR CONSTR OF DRIVES

BEGIN LIMIT OF ACCESS.....BLA  
 END LIMIT OF ACCESS.....ELA  
 LIMIT OF ACCESS  
 REQ'D R/W & LIMIT OF ACCESS  
 ORANGE BARRIER FENCE  
 ESA - ENV. SENSITIVE AREA  
 (SEE ERIT TABLE)

**W**  
**Wolverton & Associates**  
 Consulting Engineers • Land Surveyors  
 6745 Sugarloaf Parkway • Suite 100 • Duluth, Georgia 30097  
 Phone: 770-447-8999 • Fax: 770-447-9070  
 www.wolverton-assoc.com



REVISION DATES	

**UTILITY PLANS**  
**SANDERS RD**  
**SIDEWALK IMPROVEMENTS**

CHECKED:	DATE:	DRAWING No. <b>24-0008</b>
BACKCHECKED:	DATE:	
CORRECTED:	DATE:	
VERIFIED:	DATE:	

Curve# 10  
 PI Sta= 140+60.23  
 N= 1522894.46  
 E= 2310124.25  
 DELTA= 21°51'13.7" (LT)  
 B= 06°21'58.31"  
 T= 173.75  
 L= 343.28  
 R= 900.00  
 E= 16.62

CONTROL POINT NO. G-110  
 1/4" REBAR  
 STA. 142+04.22 127.60' LT  
 N 1523074.1020  
 E 2310046.7150  
 ELEV. 1194.35

LOCATION OF WL'S AND S.S.  
 FM ARE APPROXIMATE

FIELD LOCATION OF WL'S AND  
 S.S. FM NEEDED

END CONSTRUCTION  
 STA. 142+36  
 N 1523066.4774  
 E 2310178.5677

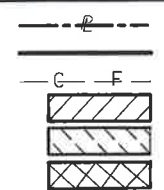
END PROJECT  
 STA. 142+50  
 N 1523079.4484  
 E 2310182.6636

POSSIBLE CONFLICT WITH GRAVITY WALL,  
 POT HOLE WL AND FM'S AT STA. 139+50,  
 140+00, 140+50

12" & 6" S.S. FM

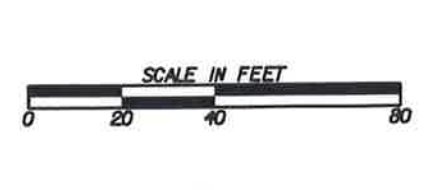
N/F  
 HULSEY LOUELLA G  
 C40 013  
 DB 5621, PG 99

PROPERTY AND EXISTING R/W LINE  
 REQUIRED R/W LINE  
 CONSTRUCTION LIMITS  
 EASEMENT FOR CONSTR  
 & MAINTENANCE OF SLOPES  
 EASEMENT FOR CONSTR OF SLOPES  
 EASEMENT FOR CONSTR OF DRIVES



BEGIN LIMIT OF ACCESS.....BLA  
 END LIMIT OF ACCESS.....ELA  
 LIMIT OF ACCESS  
 REQ'D R/W & LIMIT OF ACCESS  
 ORANGE BARRIER FENCE  
 ESA - ENV. SENSITIVE AREA  
 (SEE ERIT TABLE)

**W**  
**Wolverton & Associates**  
 Consulting Engineers - Land Surveyors  
 6745 Sugarloaf Parkway - Suite 100 - Duluth, Georgia 30097  
 Phone: 770-417-8999 - Fax: 770-417-9070  
 www.wolverton-ssoc.com



REVISION DATES	

**UTILITY PLANS**  
**SANDERS RD**  
**SIDEWALK IMPROVEMENTS**

CHECKED:	DATE:	DRAWING No. <b>24-0009</b>
BACKCHECKED:	DATE:	
CORRECTED:	DATE:	
VERIFIED:	DATE:	

