



## Forsyth County Procurement

Greg Bridges, Procurement Agent III

September 15, 2021

### ADDENDUM #4

### Bid 21-109-5211

**For: Providing all materials, equipment, and labor for the rehabilitation, restoration, and renewal of the Big Creek Greenway, Phase 2, from Union Hill Road to Fowler Park, approximately 0.859 miles. We are requesting 3 alternates in construction, timber deck, FRP Deck and concrete deck – it will be at the discretion of the County which solution is chosen.**

This addendum supersedes and supplements all portions of the bidding documents and becomes part of the contract documents for the above-referenced project.

Where any item called for in the specifications or indicated on the drawings is supplemented hereby, the original requirements shall remain in effect.

Where any original item is amended, voided or superseded hereby, the provision of such item not so specifically amended, voided or superseded shall remain in effect.

#### **Response to questions received: *(response in italics)***

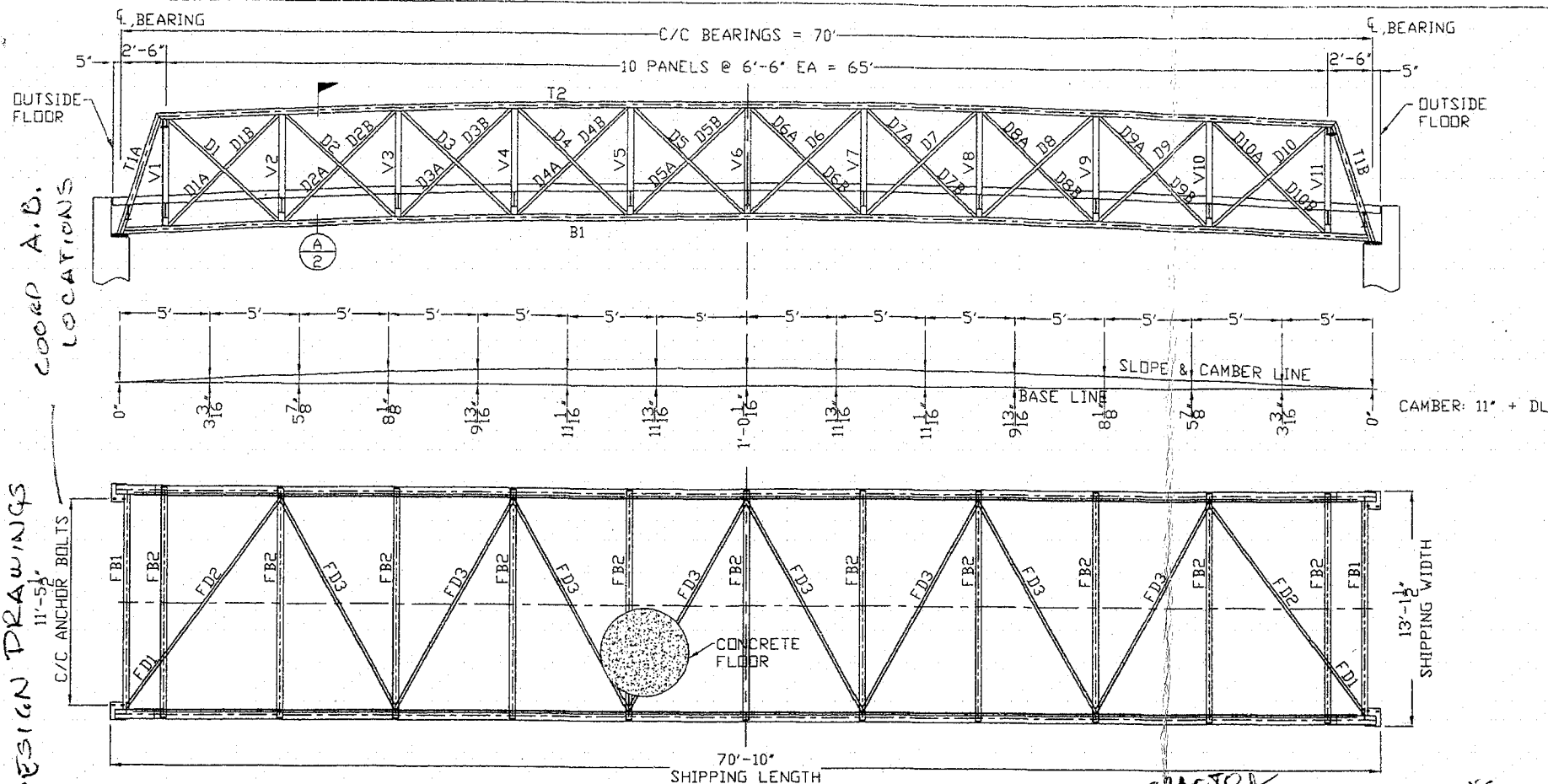
1. Is a CAD file of the proposed boardwalk alignment available? *As presented in the plans the general intention is to replace the existing boardwalk to the same plan and profile alignment as existing with the exception of those areas, designated within the plans, where the profile is to be raised to achieve 30" clearance from the existing ground or as otherwise noted to provide a smooth and pleasing visual alignment with no "jogs" or discontinuities. A CAD file of the alignment as shown in the plans can be provided; however, it is for information only and likely does not represent the as-built condition which is what must be replaced.*
2. Is a geotechnical report available for use in foundation design? *A geotechnical report was not completed. The loads required for the helical piles are specified on the plans and specifications and shall be proved by the contractor per installation.*
3. Project General Note 6 on sheet 04-0001 requires all construction to be completed top-down with no equipment permitted in wetlands or streams at any time. The details on sheet 35-0006 show a tall frame foundation to be used in areas where the boardwalk is elevated. This will nearly impossible to construct top-down. Will equipment be allowed to operate from the ground in the areas where the boardwalk is elevated greater than 6' as shown in the details on sheet 35-0006? *Equipment may be allowed to operate from the ground provided it is within the 20' existing easement, erosion control is provided, and the equipment remains outside of all wetlands and streams.*

4. The design details for Alternate 3 on sheets 35-0003 and 35-0004 show steel beams to support the precast concrete deck panels. Will precast concrete beams be acceptable as an alternate to the steel beams? *County will consider additional alternatives only after the contractor has been selected through the established bidding process.*
5. General Note 1 on sheet 35-0003 requires the design of the structure to follow AASHTO standard specifications. Note 2 calls out a vehicular load of H-5. This conflicts with AASHTO Pedestrian Bridge Guidelines which requires a 12' clear width boardwalk to be design for an H-10 vehicular load. *It is understood that the design vehicle conflicts with AASHTO Pedestrian Guidelines. However, the AASHTO Pedestrian Guidelines are recommended practices and are not standards. The design vehicle called out on the plans is the County's desired vehicle.*
6. General Note 2 on sheet 35-0003 includes a construction load of 18,000 lbs. Can you provide a make and model for the basis of the load? The wheel/track size and spacing greatly impacts the design loads and reinforcing required to support the loading. *The assumed construction loading including track size was included in the revised plans as part of Addendum #3, note #3, on sheet 35-0001.*
7. General Note 3 on sheet 35-0003 requires a 2" clear on all reinforcement. This conflicts with ACI code which allows 1 ½" clearance for reinforcement in precast concrete. Will the ACI code be acceptable? *ACI 20.5.1.3.3 establishes that faces of precast concrete that are exposed to weather should have **at least** 1.25" concrete cover to #5 bar reinforcement or smaller. Therefore, a 2" cover does not conflict with ACI code. A 2" cover on the travel surface provides better protection for the reinforcement in the top of the precast panel.*
8. The reinforcing details on sheets 35-0003 and 35-0004 imply that a precaster could follow these reinforcing details to produce a precast deck panel system that meets applicable codes and is structurally sound. The design does not appear to check for the design loads noted. General note 8 requires the contractor to submit shop drawings for the concrete panels. If the contractor produces precast panels in accordance with reinforcing details included in the plans, will Heath & Linebeck be responsible for the design? *The provided design has been checked for the noted design loads. The contractor shall stamp any drawings utilizing a different design than the plans. Shop drawings will be required regardless of the design used.*

**Existing Bridge Shop Drawings provided for Question #13 on Addendum #3:**

CONTRACTOR MUST  
COORDINATE BACKWALL  
HEIGHT WITH ABUTMENT  
DESIGN DRAWINGS

COORD. A.B.  
LOCATIONS



#### GENERAL NOTES:

1. ALL DESIGN STRESSES ARE IN ACCORDANCE WITH THE SPECIFICATION OF THE AMERICAN INSTITUTE OF STEEL CONSTRUCTION.
2. WELDING TO CONFORM WITH THE AMERICAN WELDING SOCIETY D11 LATEST REVISION. WELDING TO BE PERFORMED BY EXPERIENCED WELDERS QUALIFIED IN ACCORDANCE WITH A.W.S. PROCEDURES. WELDING ELECTRODES TO BE A.W.S. E81T-X SERIES. WELD PROCESS TO BE FCAW OR GMAW.
3. ALL STRUCTURAL STEEL TO HAVE A MINIMUM YIELD STRENGTH OF 50,000 PSI WEATHERING GRADE.
4. STRUCTURAL WELDS WILL BE A MINIMUM OF 3/16" FILLET UNLESS SHOWN OTHERWISE. MINIMUM WELD DOES NOT APPLY TO SEAL WELDS.
5. ANCHOR BOLTS TO BE ASTM A307 OR THREADED A36 STEEL RODS. WHERE NOTED, "EXPANSION" NUTS AND ANCHOR BOLTS SHOULD BE LOOSELY "HAND TIGHTENED" SO AS TO ALLOW THE BEARING PLATES TO SLIDE ON THE SETTING PLATES OR TEFLON PADS. PLACE SETTING PLATE AND TEFLON PADS ON SHIMS, SET BRIDGE, AND THEN GROUT UNDER SETTING PLATES. IF REQUIRED, FIELD SPlice CONNECTION BOLTS SHALL BE ASTM A325 TYPE 3 AND SHALL BE TIGHTENED BY THE TURN OF THE NUT METHOD TO OBTAIN PROPER TENSION.
6. ALL STEEL TO BE SAND BLASTED TO S.S.P.C. #6 "COMMERCIAL SAND BLAST FINISH".
7. CONCRETE DECK TO BE 4000 PSI LIGHTWEIGHT CONCRETE (120 PCF) ON 2" 22 GAUGE FLOOR DECK.
8. HAND RAILS AND ALL OTHER ACCESSIBLE SURFACES TO BE GROUND SMOOTH WITH NO SHARP EDGES OR CORNERS.
9. LENGTH OF ANCHOR BOLTS AND FOUNDATION DETAILS ARE FOR GENERAL ARRANGEMENT PURPOSES ONLY. ACTUAL FOUNDATION AND SUBSTRUCTURE DESIGN, RAILING, CAMBER AND SLOPE REQUIREMENTS, ELECTRICAL GROUNDING, AND CLEARANCES (FLOOD PLAIN, ROADWAY, AND WATERWAY) ARE THE RESPONSIBILITY OF OTHERS.

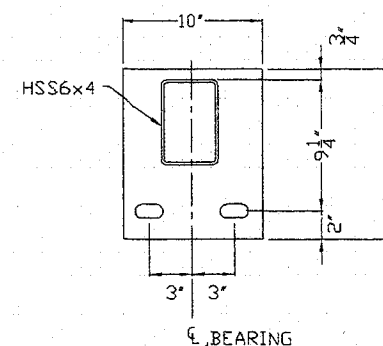
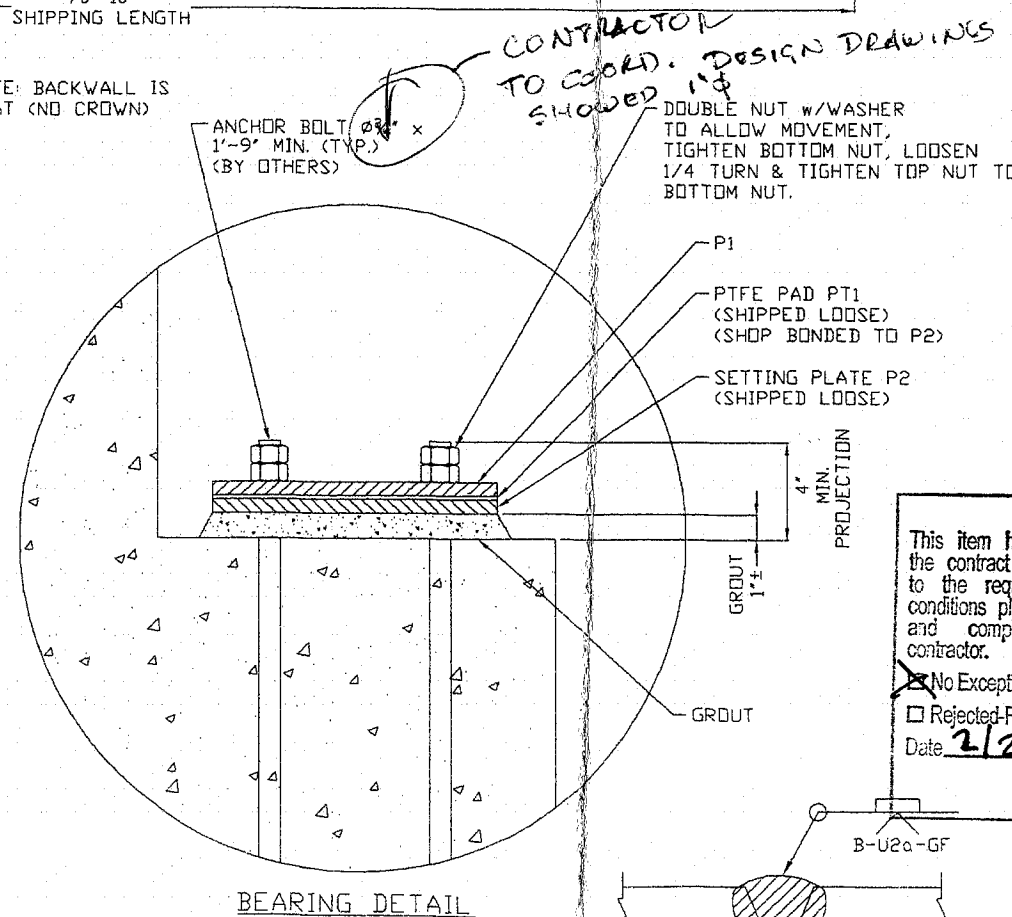
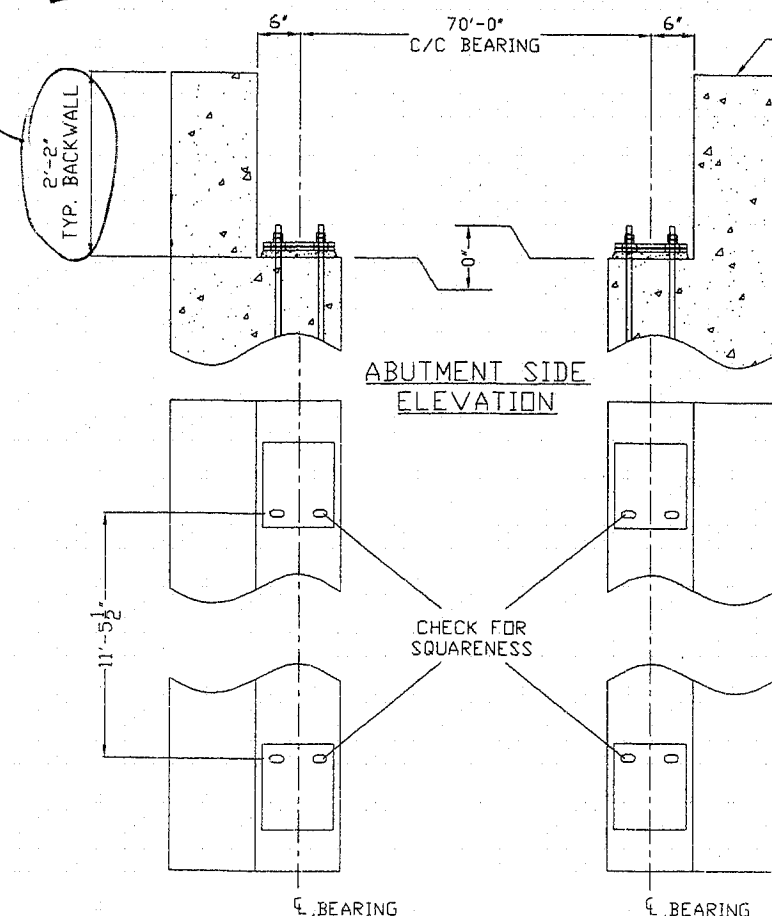
#### DESIGN CRITERIA

- THIS BRIDGE IS DESIGNED BASED ON THE FOLLOWING CRITERIA:
1. DEAD LOAD OF 61 PSF PLUS EVENLY DISTRIBUTED LIVE LOAD OF 85 PSF (REDUCED TO 65 PSF).
  2. DEAD LOAD PLUS CONCENTRATED LIVE LOAD OF 10000 POUNDS.
  3. WIND LOAD OF 30 PSF CALCULATED ON THE ENTIRE PROJECTED VERTICAL SURFACE AS THOUGH FULLY ENCLOSED.

#### MATERIAL LIST

PC. MK.	DESCRIPTION (A588, A847, A242)
T1A	HSS 6x4x3/16
T1B	HSS 6x4x3/16
T2	HSS 6x4x3/16
B1	HSS 4x4x3/16
V1-V11	HSS 4x4x3/16
D1-D11	HSS 2x2x3/16
FB1	W10x12
FB2	W10x12
FD1-FD3	HSS 2x2x3/16
TP1	C5x6.7
PR1	1/2 SQ BAR
HR1	1 1/2 SCH 40 GALV. PIPE (A53)
P1	PL 1/2x10x1'-0"
P2	PL 1/2x10x1'-0"
PT1	1/8" TEFLON PAD
TR1	HSS 2x2x3/16
CF1	C5x6.7

2 BRIDGES REQUIRED



RECORD OF REVIEW

This item has been reviewed for general conformance with the contract documents and any comment shown is subject to the requirements of the contract documents. Contract conditions place the responsibility for dimensions, coordination, and compliance with contract documents on the contractor.

☒ No Exception Taken ☐ Make Corrections Noted

☐ Rejected-Resubmit ☐ Submit Specified Item

Date 2/2/09 By [Signature]

Pond & Company  
Architects - Engineers

ABUTMENT REACTIONS  
(PER ABUTMENT, EXCLUDES IMPACT)  
VERT. DL = 24.9 KIPS  
VERT. LL = 26.5 KIPS  
HORIZ. (WIND) = 6.8 KIPS  
UPLIFT (WIND) AT ONE BP = NONE

TYP. TOP & BOTT. CHORD  
SHOP SPlice WELD DETAIL

PIONEER BRIDGES

A DIVISION OF  
BAILEY BRIDGES, INC.  
119 40th Street NE  
Fort Payne, AL 35967  
1-866-708-5778

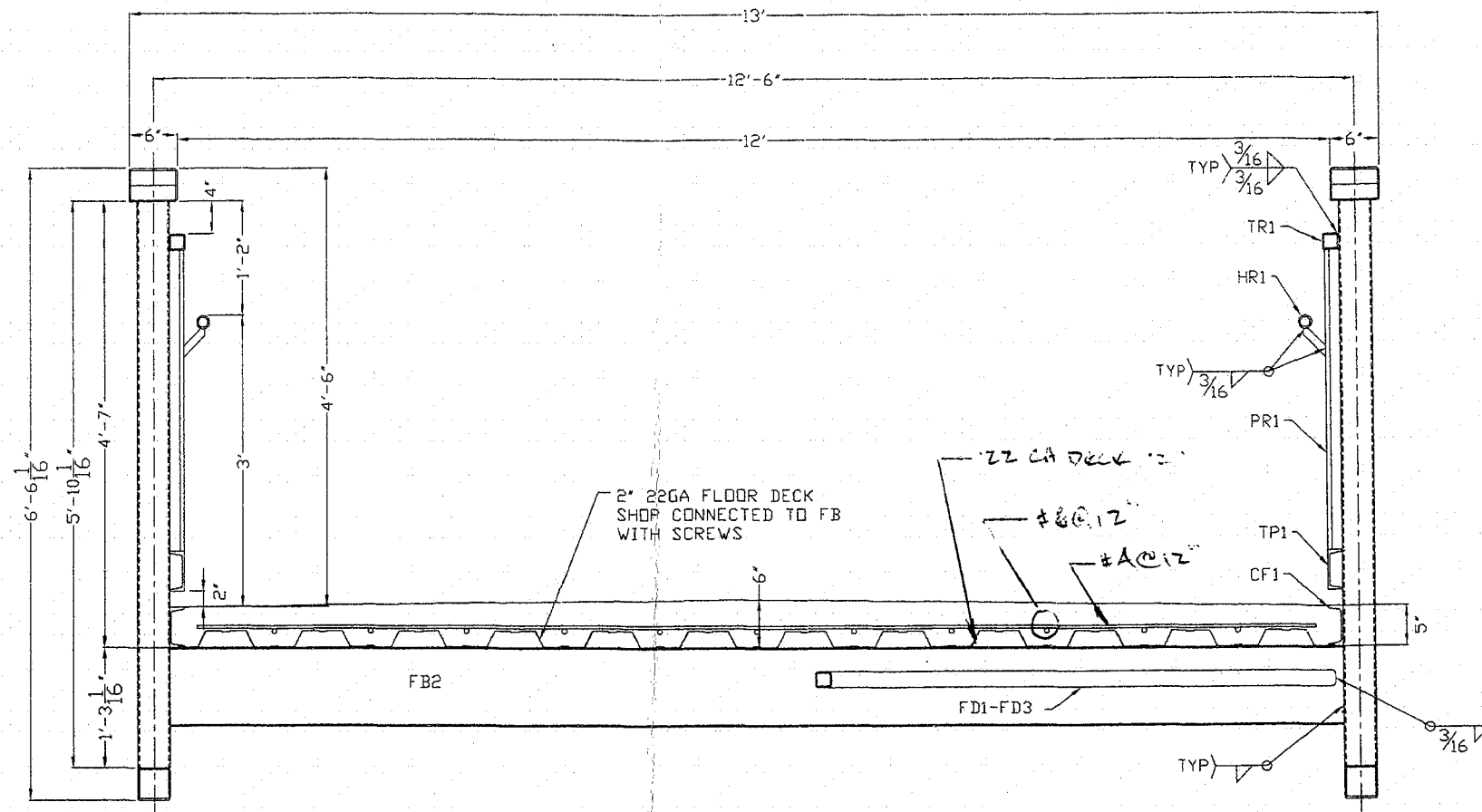
PROJECT: BIG CREEK GREENWAY  
OWNER: FORSYTH COUNTY, GA  
ADDRESS: X

DRAWN BY: AF 1/22/09  
APPROVED BY: X  
CHECKED BY: RGG

CONTRACTOR: JJE CONSTRUCTORS, INC.  
DESCRIPTION: 12' x 70' EXPEDITION PEDESTRIAN BRIDGE

THIS BRIDGE STRUCTURE SHALL NOT BE FIELD MODIFIED IN ANY WAY WITHOUT THE CONSENT AND APPROVAL OF PIONEER BRIDGES. THESE DRAWINGS ARE THE PROPERTY OF PIONEER BRIDGES AND ARE NOT TO BE COPIED OR USED IN ANY WAY DETRIMENTAL WITHOUT THEIR WRITTEN CONSENT.

JOB NO. 08233P  
SHEET: 1 of 4



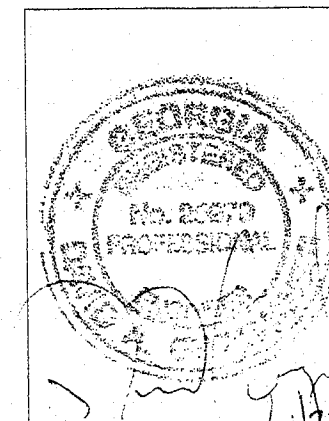
SECTION A  
1

**RECORD OF REVIEW**

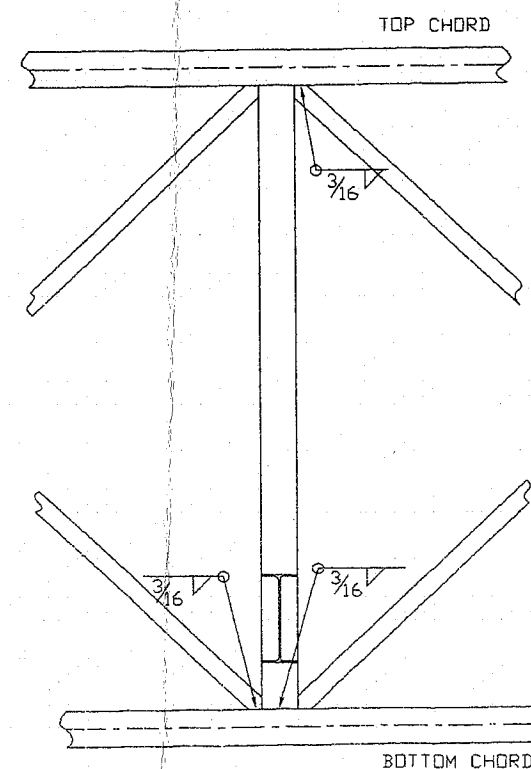
This item has been reviewed for general conformance with the contract documents and any comment shown is subject to the requirements of the contract documents. These conditions place the responsibility for dimensions, materials, and compliance with contract documents on the contractor.

☒ No Exception Taken  
☐ Rejected-Resubmit  
 Date 2/2/09 By SGG  
 Pond & Company  
 Architects - Engineers

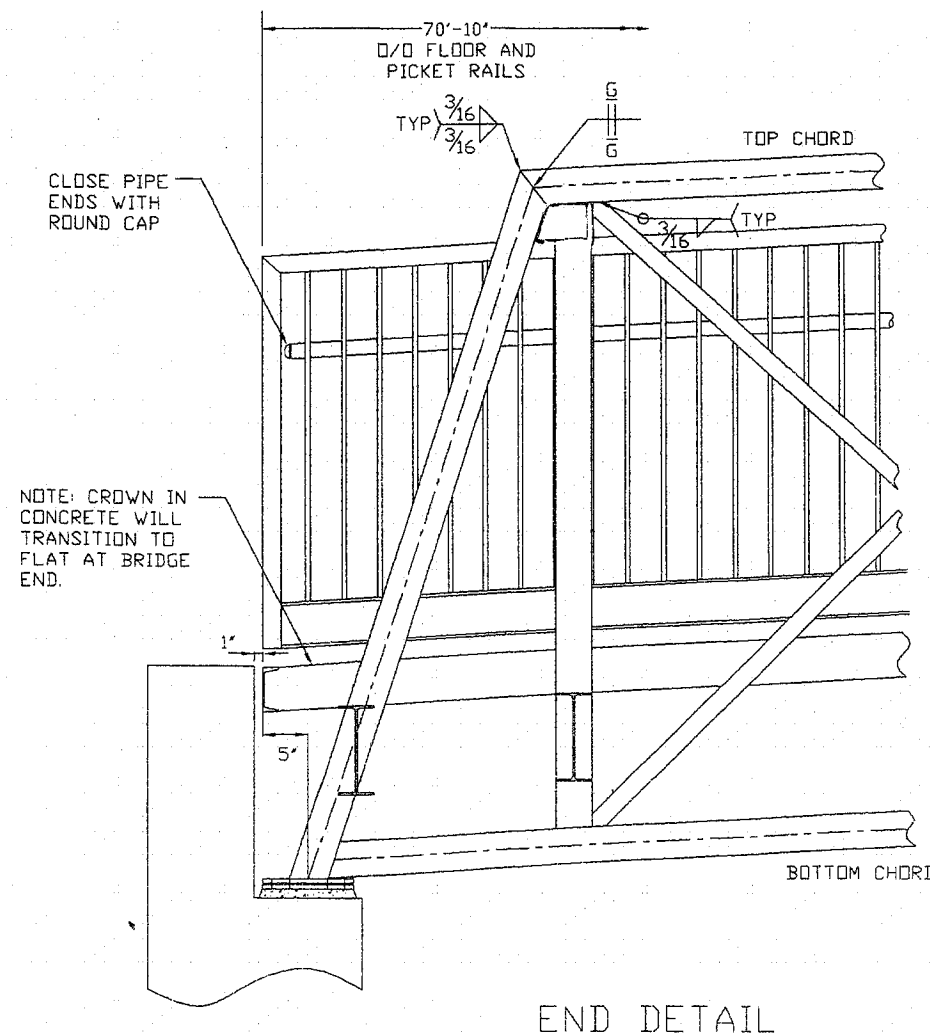
☐ Make Corrections  
☐ Submit Separately



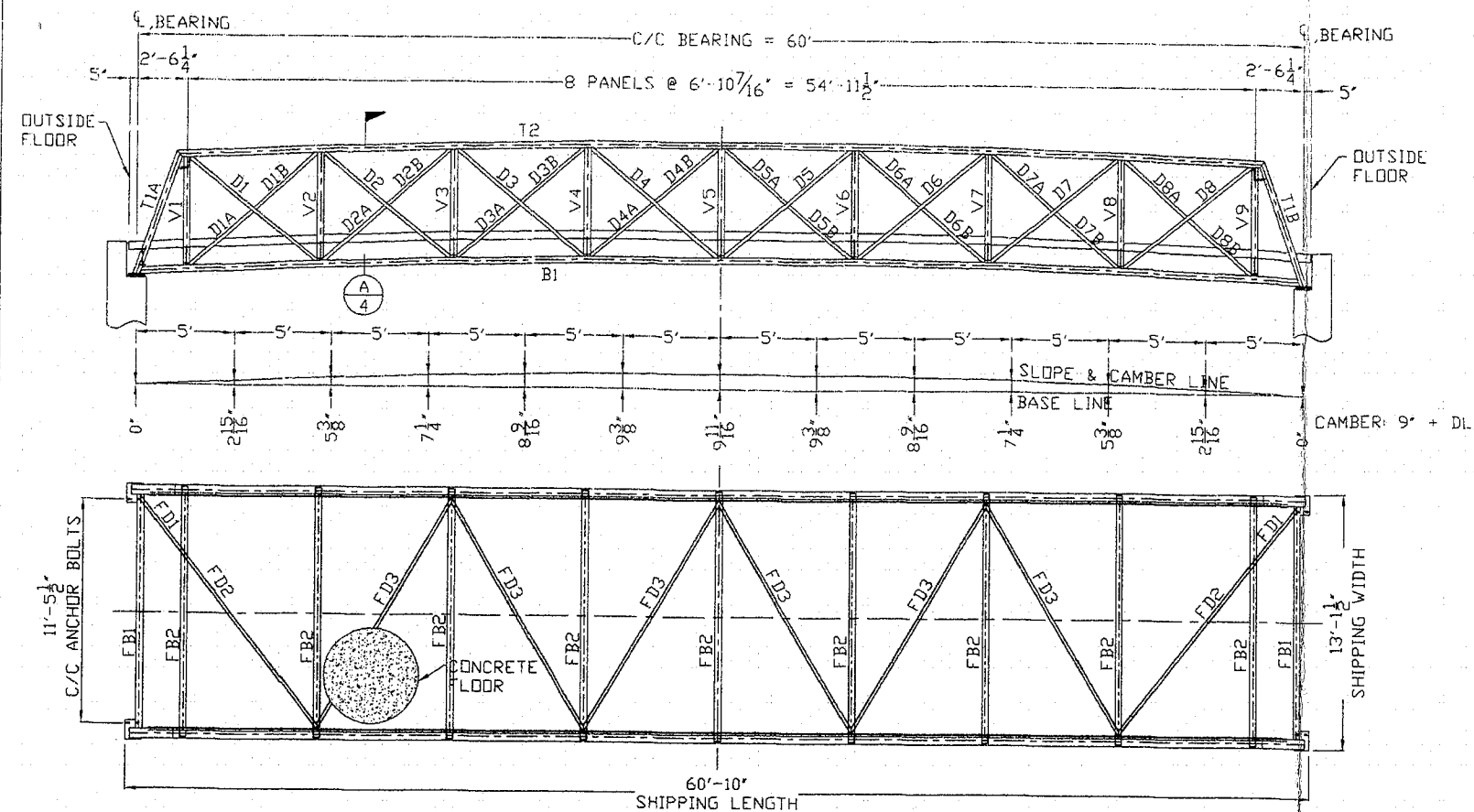
FOR APPROVAL		X	X
REV	DESCRIPTION	BY/DATE	CHECKED BY
<b>PIONEER BRIDGES</b> A DIVISION OF BAILEY BRIDGES, INC. 119 40th Street NE Fort Payne, AL 35967 1-866-708-5778		PROJECT: BIG CREEK GREENWAY OWNER: FORSYTH COUNTY, GA ADDRESS: X DRAWN BY: AF 1/22/09 APPROVED BY: X CHECKED BY: RGG	
		CONTRACTOR: JJE CONSTRUCTORS DESCRIPTION: 12' x 70' EXPEDITION PEDESTRIAN BRIDGE	
THIS BRIDGE STRUCTURE SHALL NOT BE FIELD MODIFIED IN ANY WAY WITHOUT THE CONSENT AND APPROVAL OF PIONEER BRIDGES. THESE DRAWINGS ARE THE PROPERTY OF PIONEER BRIDGES AND ARE NOT TO BE COPIED OR USED IN ANY WAY DETRIMENTAL WITHOUT THEIR WRITTEN CONSENT.		JOB NO. 08233P SHEET: 2 OF 4	



TYPICAL TRUSS  
DETAIL



END DETAIL



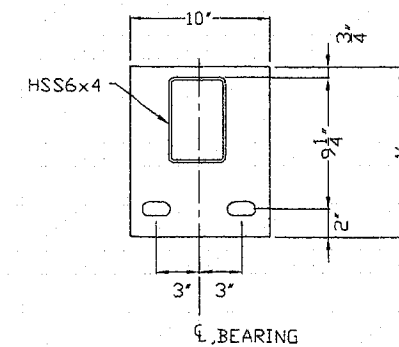
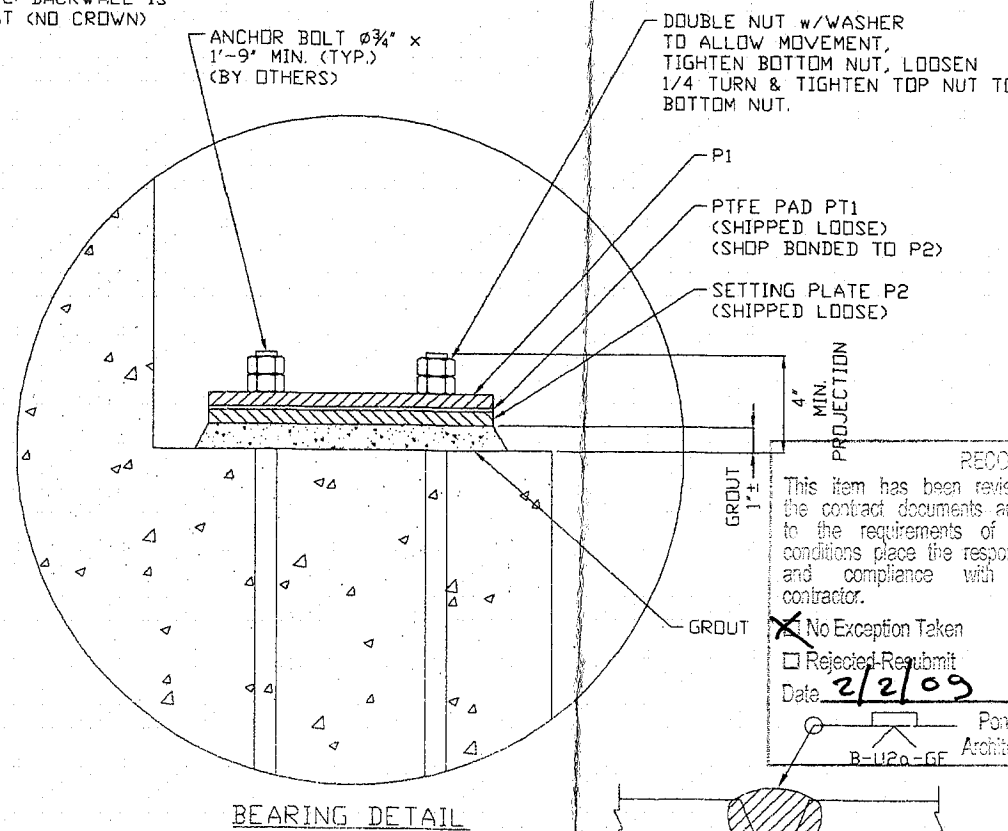
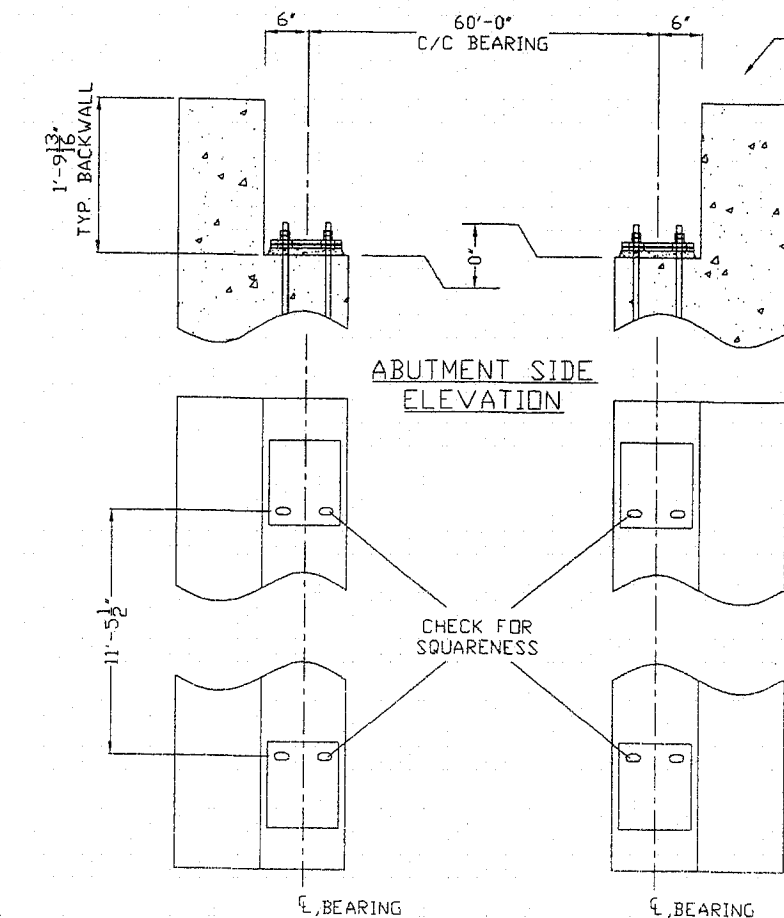
SEE  
COMMENTS  
ON 10F4

- ### GENERAL NOTES:
1. ALL DESIGN STRESSES ARE IN ACCORDANCE WITH THE SPECIFICATION OF THE AMERICAN INSTITUTE OF STEEL CONSTRUCTION.
  2. WELDING TO CONFORM WITH THE AMERICAN WELDING SOCIETY D11 LATEST REVISION. WELDING TO BE PERFORMED BY EXPERIENCED WELDERS QUALIFIED IN ACCORDANCE WITH A.W.S. PROCEDURES. WELDING ELECTRODES TO BE A.W.S. EBIT-X SERIES. WELD PROCESS TO BE FCAW OR GMAW.
  3. ALL STRUCTURAL STEEL TO HAVE A MINIMUM YIELD STRENGTH OF 50,000 PSI WEATHERING GRADE.
  4. STRUCTURAL WELDS WILL BE A MINIMUM OF  $\frac{3}{16}$ " FILLET UNLESS SHOWN OTHERWISE. MINIMUM WELD DOES NOT APPLY TO SEAL WELDS.
  5. ANCHOR BOLTS TO BE ASTM A307 OR THREADED A36 STEEL RODS. WHERE NOTED, "EXPANSION" NUTS AND ANCHOR BOLTS SHOULD BE LOOSELY "HAND TIGHTENED" SO AS TO ALLOW THE BEARING PLATES TO SLIDE ON THE SETTING PLATES OR TEFLON PADS. PLACE SETTING PLATE AND TEFLON PADS ON SHIMS, SET BRIDGE, AND THEN GROUT UNDER SETTING PLATES. IF REQUIRED, FIELD SPlice CONNECTION BOLTS SHALL BE ASTM A325 TYPE 3 AND SHALL BE TIGHTENED BY THE TURN OF THE NUT METHOD TO OBTAIN PROPER TENSION.
  6. ALL STEEL TO BE SAND BLASTED TO S.S.P.C. #6 "COMMERCIAL SAND BLAST FINISH".
  7. CONCRETE DECK TO BE 4000 PSI LIGHTWEIGHT CONCRETE (120 PCF) ON 2" 22 GAUGE FLOOR DECK.
  8. HAND RAILS AND ALL OTHER ACCESSIBLE SURFACES TO BE GROUND SMOOTH WITH NO SHARP EDGES OR CORNERS.
  9. LENGTH OF ANCHOR BOLTS AND FOUNDATION DETAILS ARE FOR GENERAL ARRANGEMENT PURPOSES ONLY. ACTUAL FOUNDATION AND SUBSTRUCTURE DESIGN, RAILING, CAMBER AND SLOPE REQUIREMENTS, ELECTRICAL GROUNDING, AND CLEARANCES (FLOOD PLAIN, ROADWAY, AND WATERWAY) ARE THE RESPONSIBILITY OF OTHERS.

- ### DESIGN CRITERIA
- THIS BRIDGE IS DESIGNED BASED ON THE FOLLOWING CRITERIA:
1. DEAD LOAD OF 61 PSF PLUS EVENLY DISTRIBUTED LIVE LOAD OF 85 PSF (REDUCED TO 70 PSF).
  2. DEAD LOAD PLUS CONCENTRATED LIVE LOAD OF 10000 POUNDS.
  3. WIND LOAD OF 30 PSF CALCULATED ON THE ENTIRE PROJECTED VERTICAL SURFACE AS THOUGH FULLY ENCLOSED.

### MATERIAL LIST

PC. MK.	DESCRIPTION (A588, A847, A242)
T1A	HSS 6x4x3/16
T1B	HSS 6x4x3/16
T2	HSS 6x4x3/16
B1	HSS 4x4x3/16
V1-V9	HSS 4x4x3/16
D1-D8	HSS 2x2x3/16
FB1	W10x12
FB2	W10x12
FD1-FD3	HSS 2x2x3/16
IP1	C5x6.7
PR1	1/2 SQ BAR
HR1	1 1/2 SCH 40 GALV. PIPE
P1	PL 1/2x10x1'-0"
P2	PL 1/2x10x1'-0"
PT1	1/8" TEFLON PAD
TR1	HSS 2x2x3/16
CF1	C5x6.7



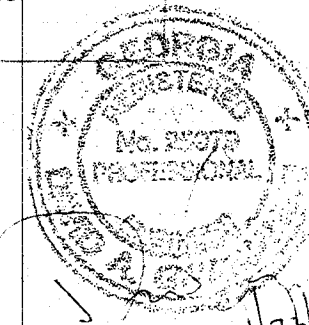
BEARING PLATE  
DETAIL, P1 & P2

RECORD OF REVIEW

Item has been reviewed for general conformance with the contract documents and any comment shown is subject to the requirements of the contract documents. Contractor conditions place the responsibility for dimensions, coordination, and compliance with contract documents on the contractor.

☒ No Exception Taken  
☐ Rejected-Resubmit  
☐ Make Corrections Noted  
☐ Submit Specified Item

Date: 2/2/09 By: [Signature]  
 Pond & Company  
 Architects - Engineers



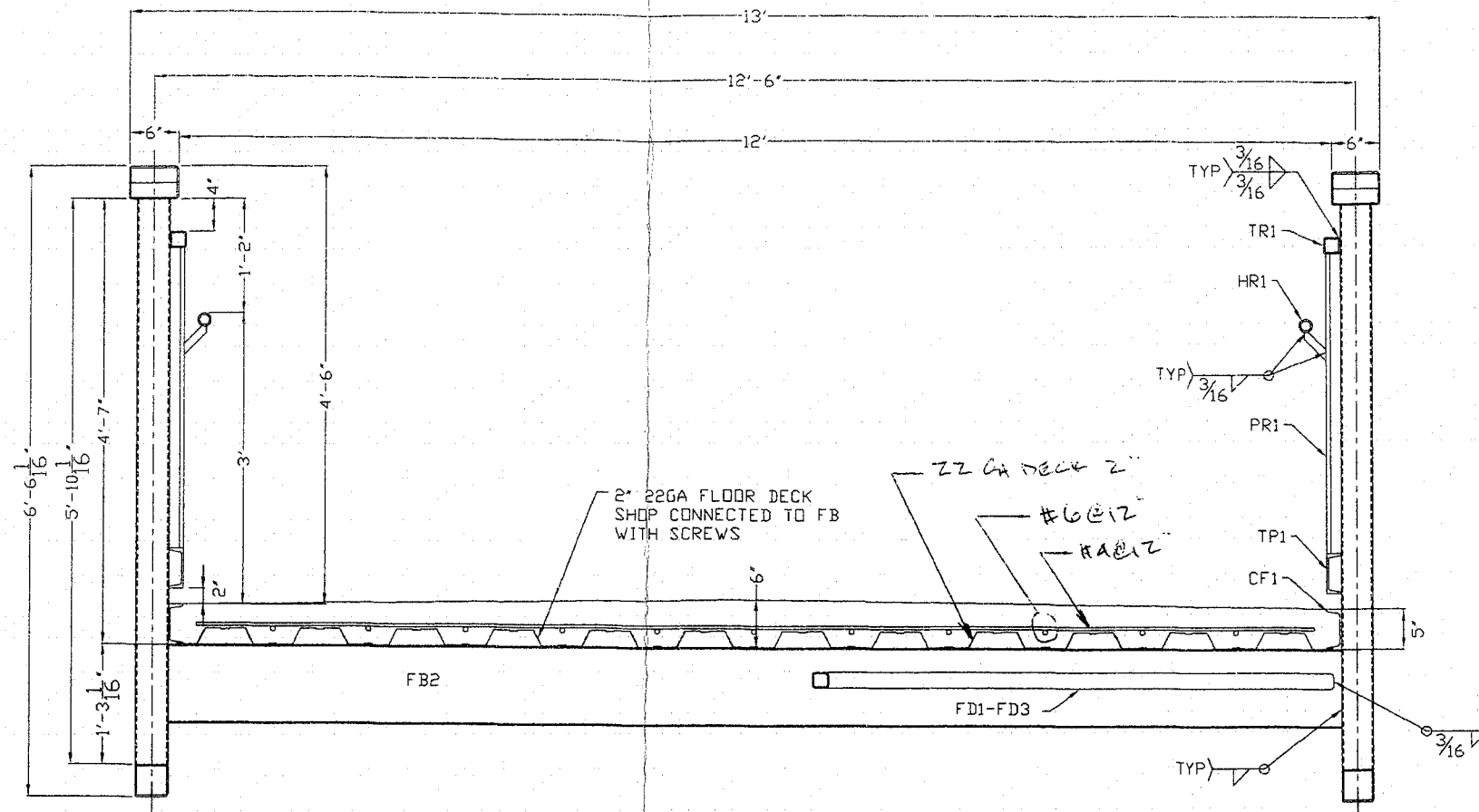
2 BRIDGES REQUIRED

ABUTMENT REACTIONS  
(PER ABUTMENT, EXCLUDES IMPACT)

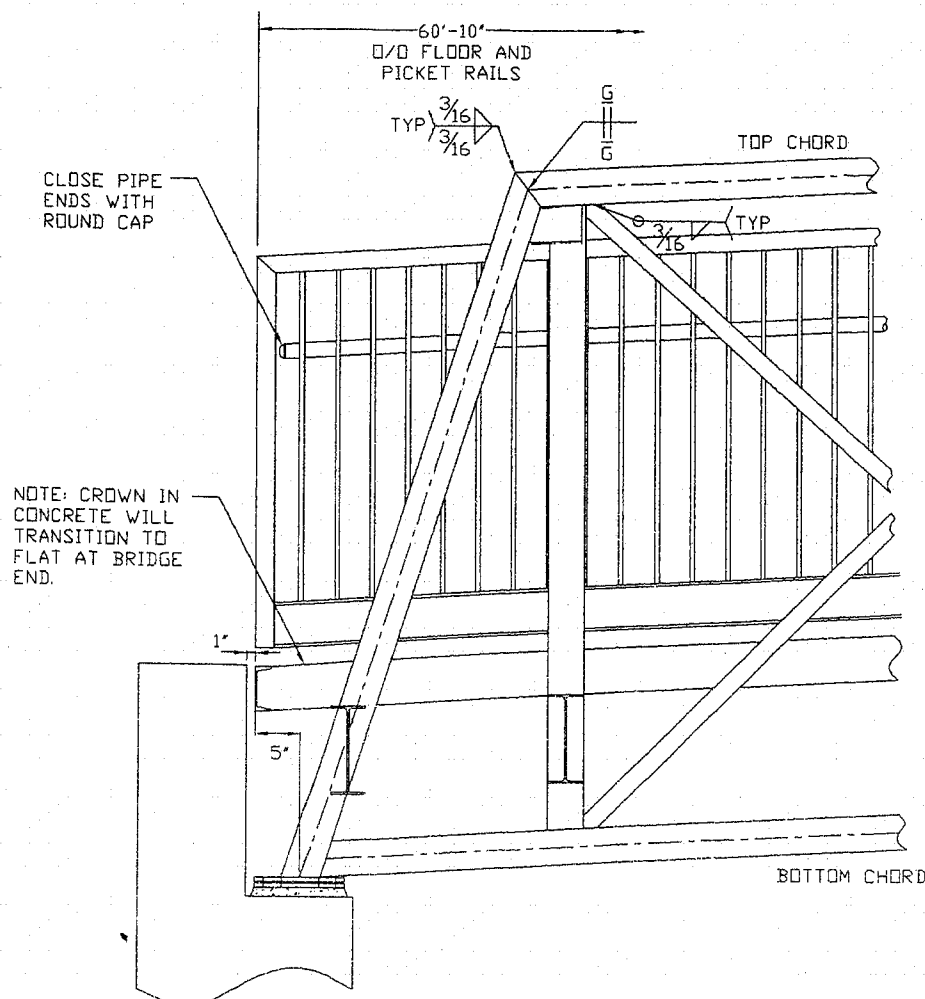
VERT. DL = 21.4 KIPS  
 VERT. LL = 24.3 KIPS  
 HORIZ. (WIND) = 5.5 KIPS  
 UPLIFT (WIND) AT ONE BP = NONE

TYP. TOP & BOT. CHORD  
SHOP SPlice WELD DETAIL

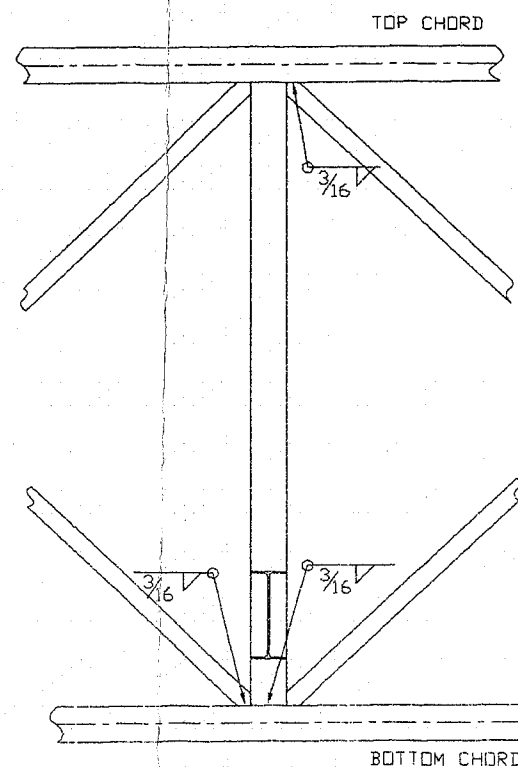
X		X	
A FOR APPROVAL		X	
REV	DESCRIPTION	BY/DATE	CHECKED BY
	<b>PIONEER BRIDGES</b>		
PROJECT: BIG CREEK GREENWAY		DRAWN BY: AF 1/23/09	
OWNER: FORSYTH COUNTY, GA		APPROVED BY: X	
ADDRESS: X		CHECKED BY: RGG	
CONTRACTOR: JJE CONSTRUCTORS, INC.			
DESCRIPTION: 12' x 60' EXPEDITION PEDESTRIAN BRIDGE			
THIS BRIDGE STRUCTURE SHALL NOT BE FIELD MODIFIED IN ANY WAY WITHOUT THE CONSENT AND APPROVAL OF PIONEER BRIDGES. THESE DRAWINGS ARE THE PROPERTY OF PIONEER BRIDGES AND ARE NOT TO BE COPIED OR USED IN ANY WAY DETRIMENTAL WITHOUT THEIR WRITTEN CONSENT.		JOB NO: 08233P	REV.
		SHEET: 3 of 4	



SECTION A  
3



END DETAIL



TYPICAL TRUSS  
DETAIL

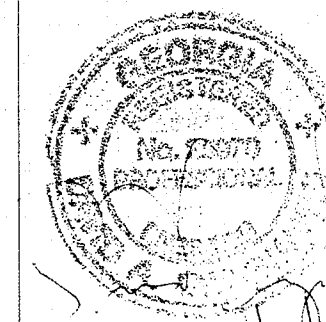
**RECORD OF REVIEW**

This item has been reviewed for general conformance with the contract documents and any comment shown is subject to the requirements of the contract documents. These conditions place the responsibility for dimensions, materials, and compliance with contract documents on the contractor.

☒ No Exception Taken ☐ Rejected - Resubmit ☐ Rejected - Resubmit

Date 2/2/09 90A

Pond & Company  
Architects - Engineers



FOR APPROVAL		BY/DATE	CHECKED BY
REV	DESCRIPTION		
<b>PIONEER BRIDGES</b>		A DIVISION OF BAILEY BRIDGES, INC. 119 40th Street NE Fort Payne, AL 35967 1-866-708-5778	
PROJECT: BIG CREEK GREENWAY		DRAWN BY: AF 1/23/09	
OWNER: FORSYTH COUNTY, GA		APPROVED BY: X	
ADDRESS: X		CHECKED BY: RGG	
CONTRACTOR: JJE CONSTRUCTORS			
DESCRIPTION: 12' x 60' EXPEDITION PEDESTRIAN BRIDGE			
THIS BRIDGE STRUCTURE SHALL NOT BE FIELD MODIFIED IN ANY WAY WITHOUT THE CONSENT AND APPROVAL OF PIONEER BRIDGES. THESE DRAWINGS ARE THE PROPERTY OF PIONEER BRIDGES AND ARE NOT TO BE COPIED OR USED IN ANY WAY DETRIMENTAL WITHOUT THEIR WRITTEN CONSENT.		JOB NO: 08233P	REV.
		SHEET: 4 of 4	